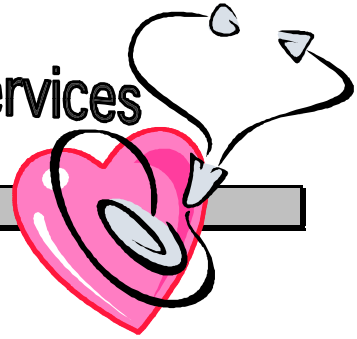


Rush-Henrietta School Health Services

HEALTH INFORMATION SHEET



To Rush-Henrietta Parents and Guardians:

This is a reminder that head lice are a community problem brought into the schools by unsuspecting children. The peak time that children become infested with head lice is in the summer, because of sleep-away camps, slumber parties, and vacationing. However, because head lice are so small, and because symptoms of itching may not develop for weeks or even months after infestation, parents and children alike often do not even know there is a problem unless the parent inspects a child's head closely and often.

So, before school starts, please begin looking carefully through your child's scalp at least once a day for the week before school begins. If you see any stage of the head louse, your child needs to be treated and the nits removed before school starts.

Information regarding head lice treatment and management is available from your building school nurse.

Head lice are a nuisance, but they are treatable and are not life threatening. Your own physician is an excellent resource for you if you have any questions. Once school begins, your school nurse can help you with specific issues related to your child's attendance in school.

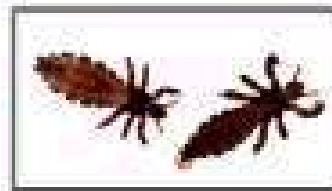
REMEMBER, THE SINGLE MOST IMPORTANT WAY TO PREVENT A HEAD LICE PROBLEM IN SCHOOL IS SURVEILLANCE BY THE PARENT AT HOME.

Thank you for your cooperation.

The Rush-Henrietta Central School District Nursing Staff



Louse Egg or "Nit"



Adult female and adult male louse